


BOTAVIKOS
skin care & aromatherapy

CARE FOR THE DELICATE LIP SKIN

NATURAL
100%
INGREDIENTS


PETA
Cruelty-Free
and Vegan





βοτανικός

— translated from the ancient Greek as
“relating to plants”.

CONTENTS

Watercolor lip balm tints.....	2
Skin care.....	3
Nude make-up.....	4
Natural colors.....	5
Natural colors.....	6
Natural lip scrub.....	9
Natural lip balms.....	11
Product compositions.....	16

COLLECTION OF WATERCOLOR LIP BALM TINTS

Natural care for the delicate skin of the lips, **soft natural transparent shades** for daytime nude makeup and **lovely botanical scents** of essential oils.





SKIN CARE

Natural waxes and natural oils are the herbal care base for each of the four tints:

Candelilla wax maintains optimum lip water-oil balance and provides gentle yet effective protection for the lips against drying out and the damaging effects of external factors.

Rice bran wax, thanks to its fatty acid composition, provides nourishment, retains moisture and softens the skin.

Shea and cocoa butter and coconut oil nourish, moisturize and restore the natural color and richness.

We have added **vitamin E** to each tint to enhance the antioxidant effect of the formula. It protects skin cells from free radicals and regenerates by stimulating the renewal process.

The balanced composition of oils and waxes gives the tints a comfortable texture; they are easy to apply and do not require frequent renewal.

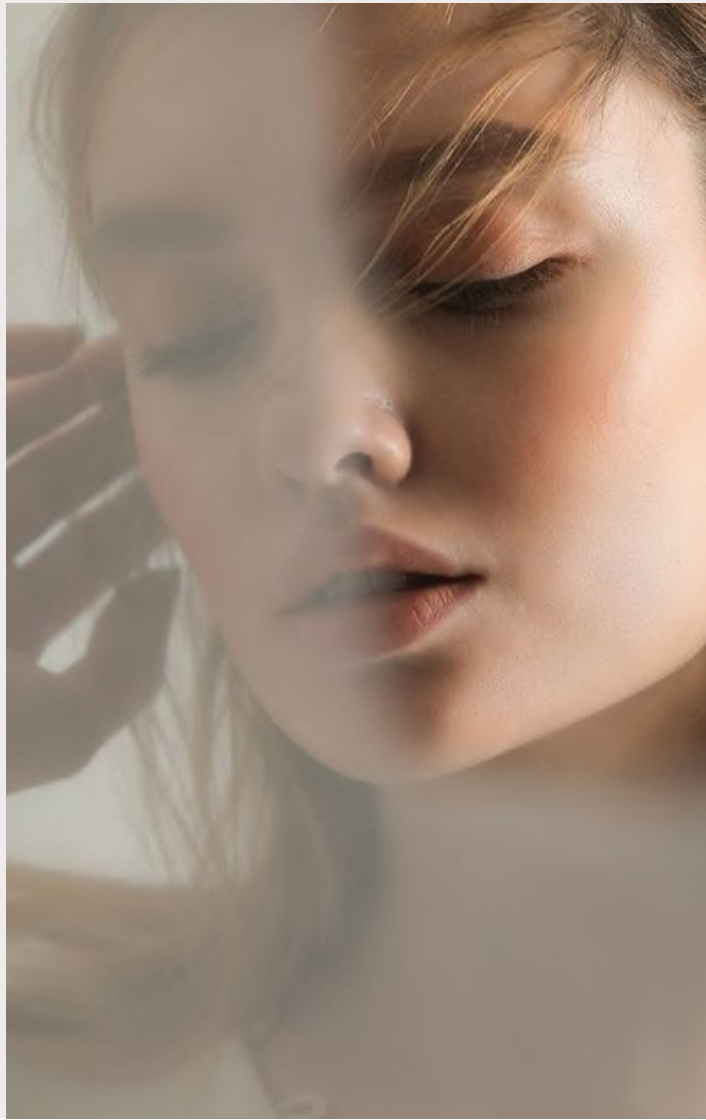
NUDE MAKEUP

Each of the four balm tints has a different color: warm red, powdery pink, rich cherry and nude chocolate. They look vibrant and saturated, but when applied, they leave a translucent watercolor shade on the lips, a silky veil of the chosen color and a wonderful natural gloss.

Tints are suitable for light daytime make-up, highlight the natural beauty of the lips and refresh the look.

FRAGRANCE

As with all BOTAVIKOS products, we choose exclusive botanical compositions of essential oils to create the fragrance. Juicy, fresh, citrusy, ripe fruit, a scattering of surprising floral notes and spicy hints – combinations of 3 to 5 essences create unique perfumed fragrances.





NATURAL DYES

To get beautiful shades, we used a safe cosmetic dye based on colored biological extracts:



Eclipta alba



**Leaves of
chinaberry tree**



Moringa seed oils

The safety of the dye has been confirmed by alternative testing methods*; the dye has not been tested on animals and complies with ISO 16128 for natural and organic cosmetic ingredients.

We have used iron oxide and mineral titanium dioxide, also safe and approved in the manufacture of cosmetics, to add shades to the base color.

*Matrex, Testskin



Watercolor tint balm

Tone 01	Nude chocolate
---------	----------------

Gentle every day care for the skin and a pastel-beige glossy tone that enhances the natural beauty of the lips.

FRAGRANCE

Orange – Chocolate

The tint's scent features a summery orange freshness combined with vanilla-chocolate benzoic resin.



Watercolor tint balm

Tone 02	Powder rose
---------	-------------

Comfortable texture, gentle care and weightless translucent tone with a flawless glossy glow.

FRAGRANCE

Fleur de Orange – Rose

In the floral fragrance of tint's fragrant composition, the alluring sweetness of rose and fleur de orange blossoms against a backdrop of languid cinnamon and woody-spicy rosewood.



Watercolor tint balm

Tone 03	Red poppy
---------	-----------

Warm red reveals a translucent poppy veil on the skin, enhancing the beauty of the lips and adding a natural glossy glow.

FRAGRANCE

Grapefruit – Tolu Balsam

The bright, fresh, fruity citrus aroma is a delightful combination of tangy lemon and tart grapefruit against a backdrop of cool, herbal rosemary and languid, thick Tolu balsam.



Watercolor tint balm

Tone 04	Juicy cherry
---------	--------------

Takes care of the delicate skin all day long and gives your lips a light, translucent cherry shade, richness and an enchanting gloss.

FRAGRANCE

Rosewood – Jasmine

Orange, rosewood, jasmine and lavender essential oils create a playful, lollipop-like “sound” of zest and flowers on a woody, smoky vetiver background.



BOTAVIKOS
skin care & aromatherapy

BOTAVIKOS
skin care & aromatherapy

BOTAVIKOS
skin care & aromatherapy

BOTAVIKOS
skin care & aromatherapy

BOTAVIKOS
skin care & aromatherapy



NATURAL LIP SCRUB

FRAGRANCE

Orange – Chocolate

Action

- cleanses and exfoliates
- nourishes
- moisturizes
- evens out micro-relief
- restores your lips' original color

Result

smooth, soft well-groomed lips without dryness

A gentle, melting lip scrub based on botanical active ingredients is suitable for both gentle supportive care and for the urgent regeneration of severely damaged, parched lips by stimulating skin cell renewal.

Sugar crystals and apricot kernel microparticles gently and effectively exfoliate the skin without traumatizing it, increasing microcirculation during self-massage.

Candelilla wax and rice bran wax create protection from external influences and retain moisture.

Shea butter, coconut oil and cocoa butter provide the skin of the lips with essential nourishment and hydration. As a result, the feeling of tightness and dryness disappears, lips become softer and firmer, color and texture improve. Regular treatment with a gentle scrub prepares the lips for a comfortable application of make-up.

Orange essential oil and a soft touch of benzoic resin vanilla create a sweet, warming aroma in the scrub.





NATURAL LIP BALMS

100% botanical formulation for caring for the delicate lip skin

- **Candelilla and Carnauba waxes** prevent moisture loss and provide protection against environmental damage.
- **Rice bran wax** has anti-inflammatory properties.
- **Coconut oil** not only moisturizes the skin, but also blocks UV rays. It helps to effectively combat dry skin at all times of the year.
- **Shea butter** provides intensive deep nourishment, comprehensive regeneration and softening of the driest and most sensitive skin areas.
- **Rosemary extract** improves microcirculation and warms the skin.
- **Vitamin E** protects skin cells from free radicals, regenerates, stimulates renewal processes.





Protective lip balm

LAVENDER +
MELISSA

A botanical-based lip balm creates lasting protection against the negative effects of the environment, while the fragrant combination of lavender and melissa fills the lips with sweetness and warmth.

Action

- protects against chapping and drying out
- restores your lips' natural brightness
- restores firmness, softness and smoothness of the lips

Active ingredients

Camellia oil nourishes the delicate skin with nutrients, soothes, regenerates and creates a protective barrier.

Lavender improves blood microcirculation, moisturizes the skin, relieves irritation and peeling.

Melissa improves skin elasticity, gives skin a healthy color, nourishes it and activates its protective processes.



Regenerating lip balm

THYME +
PEPPERMINT

A delicate restorative treatment for dry, damaged skin on the lips with essential oils of peppermint and thyme that give the balm a light herbal fragrance with a cool minty tone.

Action

- nourishes and regenerates fine, delicate lip skin
- protects against drying out and chapping
- creates solid protection against negative environmental influences

Active ingredients

Blackcurrant oil preserves the skin's youthfulness and beauty, regenerates and renews skin cells, makes the skin firmer.

Peppermint improves blood microcirculation and has an antioxidant effect.

Thyme gives the balm a light herbal aroma with cool notes.



Moisturizing lip balm

LEMON +
EUCALYPTUS

The moisturizing lip balm provides comprehensive regeneration to dry skin, and the combination of lemon and eucalyptus essential oils gives a fresh, citrusy, herbal scent.

Action

- Effectively moisturizes, giving a light, natural gloss
- protects against drying out and chapping
- restores softness and smoothness of the lips

Active ingredients

Babassu oil effectively moisturizes the lip skin, protects against environmental damage and provides long-lasting delicate care.

Olive oil makes your lips soft and smooth, giving it a light, natural gloss.

Lemon strengthens vascular walls and stimulates collagen synthesis.

Eucalyptus gives the balm a fresh, citrusy, herbal fragrance fitting for any time of year.



Nourishing lip balm

ORANGE +
CINNAMON

The nourishing lip balm effectively repairs damaged skin, and the combination of orange and cinnamon essential oils warms it and gives it a fresh, spicy scent.

Action

- nourishes, smoothes and brightens the delicate lip skin
- protects against drying out and chapping
- creates solid protection against negative environmental influences

Active ingredients


Avocado oil has an anti-inflammatory, moisturizing, rejuvenating and protective effect.

Mango butter speeds up skin regeneration, has soothing, anti-inflammatory, moisturizing, photoprotective and regenerating properties.

Orange saturates skin with vitamins and improves circulation.

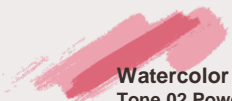
Cinnamon nourishes and smoothes delicate skin, giving it a beautiful, even color.

PRODUCT COMPOSITIONS




Watercolor tint balm Tone 01 Nude Chocolate

Caprylic/Capric Triglyceride, Cocos Nucifera Seed Butter, Candelilla Wax, Butyrospermum Parkii Butter, Isopropyl Myristate, Ricinus Communis Seed Oil, Rice Bran Wax, Cetearyl Alcohol, Tocopheryl Acetate, Hydrogenated Ethylhexyl Olivat, Hydrogenated Olive Oil Unsaponifiables, Theobroma Cacao Seed Butter, Citrus Aurantium Dulcis Peel Oil, Styrax Tonkinensis Resin Extract, Limonene*, Iron Oxide Red.



Watercolor tint balm Tone 02 Powder Rose

Caprylic/Capric Triglyceride, Cocos Nucifera Seed Butter, Candelilla Wax, Butyrospermum Parkii Butter, Isopropyl myristate, Ricinus Communis Seed Oil, Rice Bran Wax, Cetearyl Alcohol, Tocopheryl Acetate, Hydrogenated Ethylhexyl Olivat, Hydrogenated Olive Oil Unsaponifiables, Theobroma Cacao Seed Butter, Aniba Rosaeodora Wood Oil, Rose Damascena Flower Oil, Cinnamomum Cassia Leaf Oil, Citrus Aurantium Amara Flower Extract, Linalool*, Geraniol*, Citronellol*, Cinnamal*, Titanium Dioxide, Eclipta Prostrata Extract, Melia Azadirachta Leaf Extract, Moringa Oleifera Seed Oil.



Watercolor tint balm Tone 03 Poppy Red

Caprylic/Capric Triglyceride, Cocos Nucifera Seed Butter, Candelilla Wax, Butyrospermum Parkii Butter, Isopropyl Myristate, Ricinus Communis Seed Oil, Rice Bran Wax, Cetearyl Alcohol, Tocopheryl Acetate, Hydrogenated Ethylhexyl Olivat, Hydrogenated Olive Oil Unsaponifiables, Theobroma Cacao Seed Butter, Citrus Paradisi Peel Oil, Citrus Limon Peel Oil, Myroxylon Balsamum Resin, Rosmarinus Officinalis Leaf/Stem Oil, Limonene*, Citral*, Linalool*, Eclipta Prostrata Extract, Melia Azadirachta Leaf Extract, Moringa Oleifera Seed Oil.



Watercolor tint balm Tone 04 Juicy Cherry

Caprylic/Capric Triglyceride, Cocos Nucifera Seed Butter, Candelilla Wax, Butyrospermum Parkii Butter, Isopropyl myristate, Ricinus Communis Seed Oil, Rice Bran Wax, Cetearyl Alcohol, Tocopheryl Acetate, Hydrogenated Ethylhexyl Olivat, Hydrogenated Olive Oil Unsaponifiables, Theobroma Cacao Seed Butter, Citrus Aurantium Dulcis Peel Oil, Aniba Rosaeodora Wood Oil, Jasminum Grandiflorum Flower Extract, Vetiveria Zizanioides Root Oil, Lavandula Hybrid Herb Oil, Limonene*, Linalool*, Eugenol*, Eclipta Prostrata Extract, Melia Azadirachta Leaf Extract, Moringa Oleifera Seed Oil, CI 77510.

The weight of each product: 4 g Shelf life: 2 years

* essential oil components

Protective lip balm | Lavender + melissa

Caprylic/Capric Triglyceride, Cocos Nucifera Oil, Euphorbia Cerifera Wax, Butyrospermum Parkii Butter, Tocopheryl Acetate, Camellia Oleifera Seed Oil, Lavandula Hybrida Herb Oil, Cymbopogon winterianus herb oil, Copernicia Cerifera Wax, Oryza Sativa Bran Wax, Rosmarinus Officinalis Leaf Extract, Linalool*, Citronellol*, Limonene*, Geraniol*, Citral*, Eugenol*, Coumarin*.

Regenerating lip balm | Thyme + peppermint

Caprylic/Capric Triglyceride, Cocos Nucifera Oil, Euphorbia Cerifera Wax, Butyrospermum Parkii Butter, Tocopheryl Acetate, Ribes Nigrum Seed Oil, Mentha Arvensis Leaf Oil, Thymus Serpillum Oil, Copernicia Cerifera Wax, Oryza Sativa Bran Wax, Rosmarinus Officinalis Leaf Extract, Linalool*, Limonene*.

Moisturizing lip balm | Lemon + eucalyptus

Caprylic/Capric Triglyceride, Cocos Nucifera Oil, Euphorbia Cerifera Wax, Butyrospermum Parkii Butter, Tocopheryl Acetate, Olea Europaea Fruit Oil, Orbignya Speciosa Kernel Oil, Citrus Limon Fruit Oil, Eucalyptus Globulus Leaf Oil, Copernicia Cerifera Wax, Oryza Sativa Bran Wax, Rosmarinus Officinalis Leaf Extract, Limonene*, Citral*, Geraniol*, Linalool*.

Nourishing lip balm | Orange + cinnamon

Caprylic/Capric Triglyceride, Cocos Nucifera Oil, Euphorbia Cerifera Wax, Butyrospermum Parkii Butter, Tocopheryl Acetate, Persea Gratissima Oil, Mangifera Indica Seed Butter, Citrus Sinensis Peel Oil, Cinnamomum Zeylanicum Leaf Oil, Copernicia Cerifera Wax, Oryza Sativa Bran Wax, Rosmarinus Officinalis Leaf Extract, Limonene*, Linalool*, Geraniol*, Citral*, Citronellol*.

Chamomile and jojoba oil lip balm | Scentless


Caprylic/Capric Triglyceride, Cocos Nucifera Oil, Euphorbia Cerifera Wax, Butyrospermum Parkii Butter, Tocopheryl Acetate, Chamomilla Recutita Oil, Simmondsia Chinensis Seed Oil, Copernicia Cerifera Wax, Oryza Sativa Bran Wax, Rosmarinus Officinalis Leaf Extract.

Lip scrub | Orange – Chocolate

Prunus Armeniaca (Apricot) Seed Powder, Caprylic/Capric Triglyceride, Butyrospermum Parkii Butter, Sucrose, Cocos Nucifera Seed Butter, Candelilla Wax, Cetearyl Alcohol, Rice Bran Wax, Isopropyl myristate, Theobroma Cacao Seed Butter, Citrus Aurantium Dulcis Peel Oil, Styra Tonkinensis Resin Extract, Limonene*.

The weight of each product: 4 g Shelf life: 2 years

*essential oil components

www.botavikos.ru | botavikos   

You are true to yourself
and trust in nature —
you choose Botavikos

Online shop
www.botavikos.club

hello@botavikos.ru
+7 495 150-18-26

